

November 13, 2008

TO: Board of Education
FROM: Dr. Joni Swanson
RE: Report on Academic Targets

The Board of Education established Academic Targets in December 2007 for students in grades K-12. As a result of the Board's direction, Directed Reading Assessment scores were tracked and recorded for all students in grades Kindergarten through 5th grade. Benchmark scores for the EXPLORE, PLAN and ACT tests were recorded based on the levels established by the American College Testing program. The Academic Targets specifically mentioned working toward increasing the numbers of students in the Algebra 1 in 8th grade, and in advanced math classes in 11th and 12th grades. These data have also been collected.

DRA2 scores indicated that 806 of 1104 students in grades K-5 or **73% were reading at or above grade level according to the DRA2 testing.** I currently have no data to show the number of students who scored below grade level but had grown the equivalent of one year's instruction at the end of the year.

The District's goal is to prepare 60% of students to meet the benchmarks in Math, Reading and Science Reasoning Exams and 80% to meet the benchmarks in English on both the ACT and the EXPLORE exams
The present 9th and 10th grade classes met the district goal in all subtests except for Science Reasoning on the EXPLORE test.
The present 12th grade class met the district goal level for the ACT test on the English and Reading tests, but fell short in the Math and Science Reasoning Tests.

Regarding the district's goal to increase numbers of students taking particular math classes at the Middle and High School level, the following data were collected for the 2008-09 school year:

40.5% of 8th grade students were enrolled in 8th grade Algebra 1
40.2% of 11th grade and 12th grade students were enrolled in Trigonometry, Pre-Calculus or Calculus classes.

See accompanying documents and my blog at: <http://www.gcsdblogs.org/swanson/> for further information.

DRA2 Test Results by Grade Level for 2007-08

Scores are marked for the % of students in each category at the time of test administration.

Grade level	Spring Test Below Level	Spring Test On Level	Spring Test Above Level
Kindergarten	19.9%	30.9%	49.2%
1 st Grade	32.9%	32.5%	34.6%
2 nd Grade	40.1%	30.5%	29.4%
3 rd Grade	31.5%	49.4%	19.1%
4 th Grade	16.9%	77.8%	5.3%
5 th Grade	21.1%	71.0%	7.9%

Historical Benchmark Data
ACT, PLAN, EXPLORE

Class of.....		Percentage of Students meeting benchmarks			
Benchmark Data	English-2004	Math- 2004	Reading-2004	Science- 2004	
PLAN	72	51	55	27	
ACT	66	46	59	31	
English- 2005		Math-2005	Reading-2005	Science-2005	
PLAN	57	50	52	33	
ACT	63	49	49	31	
English-2006		Math-2006	Reading-2006	Science-2006	
PLAN	79	68	44	29	
ACT	69	42	50	29	
English-2007		Math-2007	Reading-2007	Science-2007	
PLAN	74	36	57	31	
ACT	68	46	51	24	
English-2008		Math-2008	Reading-2008	Science-2008	
EXPLORE	82	63	59	20	
PLAN	78	41	56	29	
ACT	69	49	58	30	
English-2009		Math-2009	Reading-2009	Science-2009	
EXPLORE	82	74	72	22	
PLAN	69	45	65	38	
ACT	71	51	63	40	
English-2010		Math-2010	Reading-2010	Science-2010	
EXPLORE - 9th	82	64	62	23	
PLAN	74	42	57	26	
ACT					
English-2011		Math-2011	Reading-2011	Science-2011	
EXPLORE - 8th	80	63	69	15	
EXPLORE - 9th	89	70	78	39	
PLAN					
ACT					
English-2012		Math-2012	Reading-2012	Science-2012	
EXPLORE - 8th	73	59	52	13	
PLAN					
ACT					
Benchmark Levels	English	Math	Reading	Science	
EXPLORE	English - 13	Math - 17	Reading - 15	Science - 20	
PLAN	English 17	Math - 19	Reading - 17	Science - 21	
ACT	English - 18	Math - 22	Reading - 21	Science - 24	

ACT National Report
Historical Data

Average ACT Scores	English	Mathematics	Reading	Science	Composite	# of Students
Class of 2008	20.2	21.1	21.6	20.8	21	234
Class of 2009	20.7	21.3	21.9	21.6	21.5	227

Subtest Score Averages	English Usage	Rhetoric	Reading Social Studies	Literature	Mathematics Pre-Algebra	Algebra	Plane Geometry	Scale Score
Class of 2008	9.8	10.6	11	10.8	10.9	10.5	10.8	18
Class of 2009	10.1	10.8	11.2	11.1	11	10.8	11	18

% Meeting Benchmarks	English	Mathematics	Reading	Science
Class of 2008	69	49	58	30
Class of 2009	71	51	63	40

% Meeting Benchmarks	English	Mathematics	Reading	Science	All Four
Class of 2008 - male	62	49	49	25	21
Class of 2009 - male	58	41	53	37	27
Class of 2008 - female	75	43	65	31	27
Class of 2009 - female	78	53	68	38	33

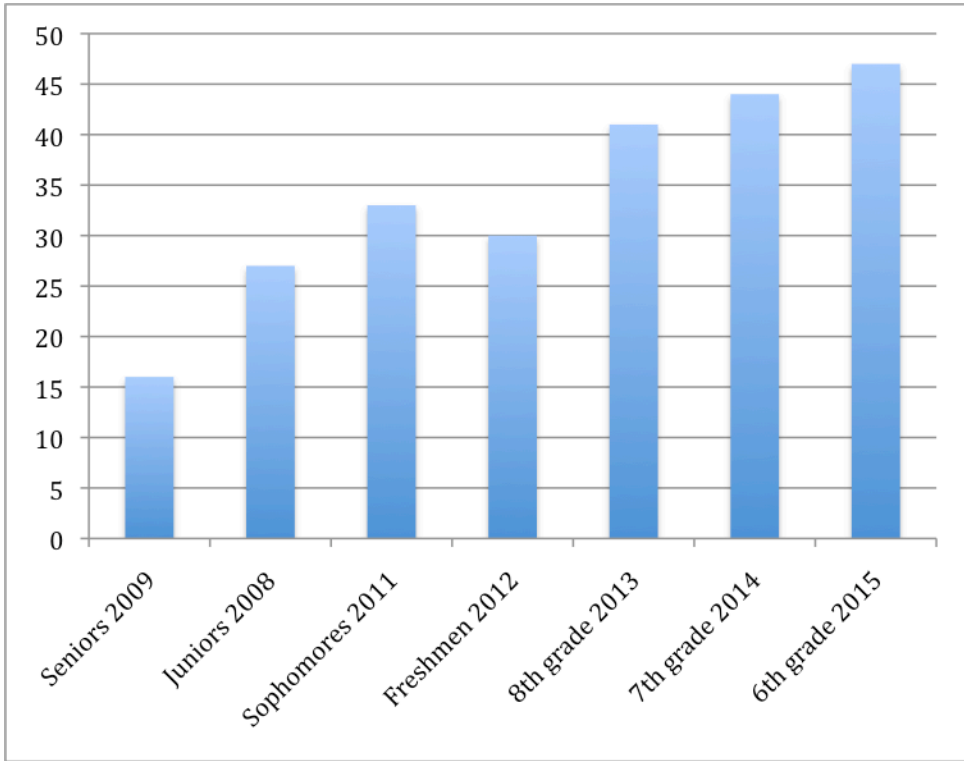
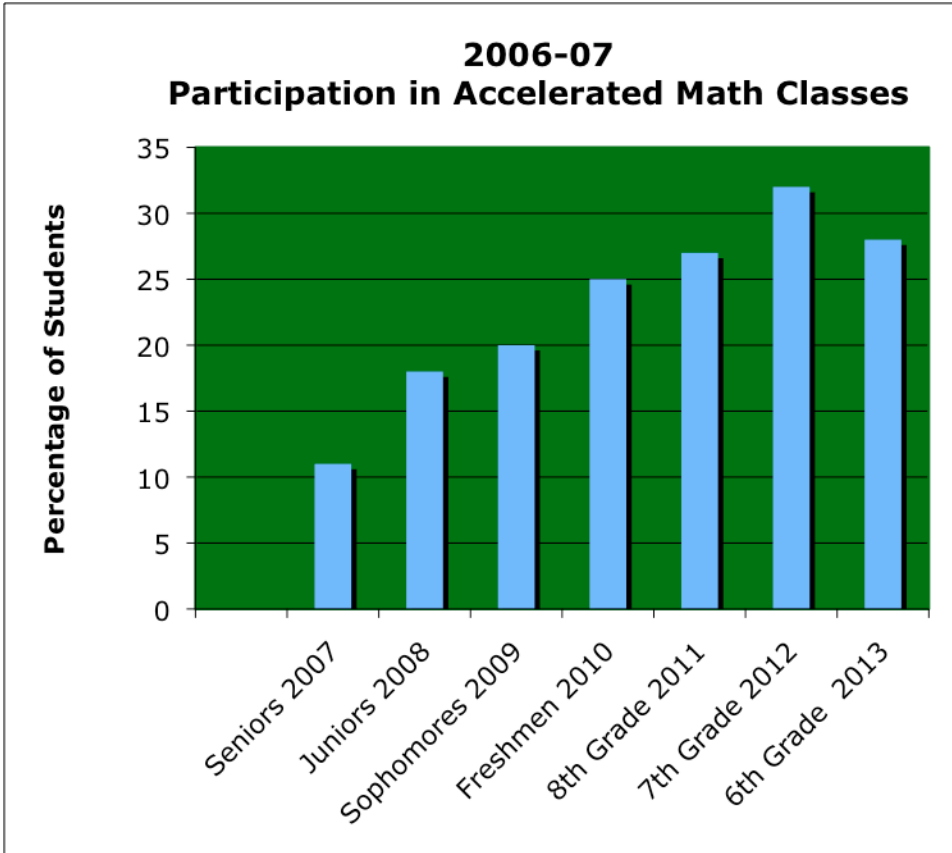
	% core or more	% less than core
Class of 2004	28	67
Class of 2005	30	68
Class of 2006	18	79
Class of 2007	40	59
Class of 2008	48	49

% Meeting Benchmarks	Curriculum Completed	English	Math	Reading	Science	All Four
Class of 2009	Core*	88%	69%	78%	56%	44%
	Non-Core	51%	28%	46%	22%	18%

*Completed Core= 4 yrs Eng., 3 years Math, SS, Science.

% Meeting Benchmarks	Curriculum Completed	English	Math	Reading	Science
Class of 2009	Core*	69%	58%	63%	52%
	Non-Core	17%	5%	54%	13%

*Math = taking 3 or more years of math, regardless of courses taken in other content areas.



Percentage of students in Accelerated Classes in 2008-09