

## Annual School Crime & Violence Incident Rates

**Goal 3.2:** Every school promotes a healthy, active lifestyle where students are encouraged to make responsible choices.

School Year	PW	PS	PA *	AP	AR	SA	AW	SO	PF	RO	RW	IM	R	D	K	BT *	BS *	Total	TCS	NC	TCS to	NC	Lowest	TCS to
																			Rate	Rate	NC	Diff	Rate	Lowest
1995-1996	11	11		7	0	0	1	0	4	0	0	0	0	0	0			34	9.052	7.152	1.900	0.270	8.782	
1996-1997	14	8		3	1	1	0	0	1	0	0	0	0	0	0			28	7.218	6.724	0.494	0.811	6.407	
1997-1998	13	6		0	1	0	0	0	0	0	0	0	0	0	1			21	5.380	6.343	-0.963	0.768	4.612	
1998-1999	10	18		4	0	0	0	0	0	0	0	0	0	0	0			32	8.322	6.237	2.085	0.928	7.394	
1999-2000	10	7		4	1	0	0	0	0	0	0	0	0	0	0			22	5.717	5.980	-0.263	1.113	4.604	
2000-2001	12	3		4	3	0	0	0	0	0	0	0	0	0	0			22	5.783	6.083	-0.300	1.392	4.391	
2001-2002	13	20	13	1	0	0	0	0	0	0	0	0	0	0	0	0	0	47	12.404	7.709	4.695	0.251	12.153	
2002-2003	21	10	7	2	0	0	0	0	0	0	0	0	0	0	0	0	0	40	10.710	6.581	4.129	1.414	9.296	
2003-2004	16	11	9	4	3	1	1	0	0	0	0	0	0	0	0	0	0	45	11.955	7.371	4.584	0.937	11.018	
2004-2005	21	4	1	4	0	1	0	0	0	0	0	0	0	0	0	0	0	31	8.309	7.532	0.777	0.960	7.349	
2005-2006	16	18	2	3	0	0	0	0	0	0	0	0	0	0	0	2	0	41	10.995	7.900	3.095	0.797	10.198	
2006-2007	15	12	4	1	0	0	0	0	0	0	0	0	0	0	0	3	0	35	9.316	7.770	1.546	0.785	8.531	
2007-2008	23	37	3	1	0	0	0	0	0	0	0	0	0	0	0	0	0	64	17.117	7.850	9.267	0.000	17.117	
<b>13-Year Mean</b>	15.0	12.7	5.6	2.9	0.7	0.2	0.2	0.0	0.4	0.0	0.0	0.0	0.0	0.0	0.1	0.7	0.0	35.5	9.4	7.0	2.388	0.8	8.6	

**LEGEND**

- PW** Possession of a weapon
- PS** Possession of a controlled substance
- PA \*** Possession of an alcoholic beverage
- AP** Assault on school personnel
- AR** Assault resulting in serious injury
- SA** Sexual assault
- AW** Assault involving the use of a weapon
- PF** Possession of a firearm
- RO** Robbery without a dangerous weapon

- SO** Sexual offense
- RW** Robbert with a dangerous weapon
- IM** Indecent liberties with a minor
- R** Rape
- K** Kidnapping
- D** Death by other than natural causes
- BT \*** Bomb threat
- BS \*** Burning of a school building

**NOTES**

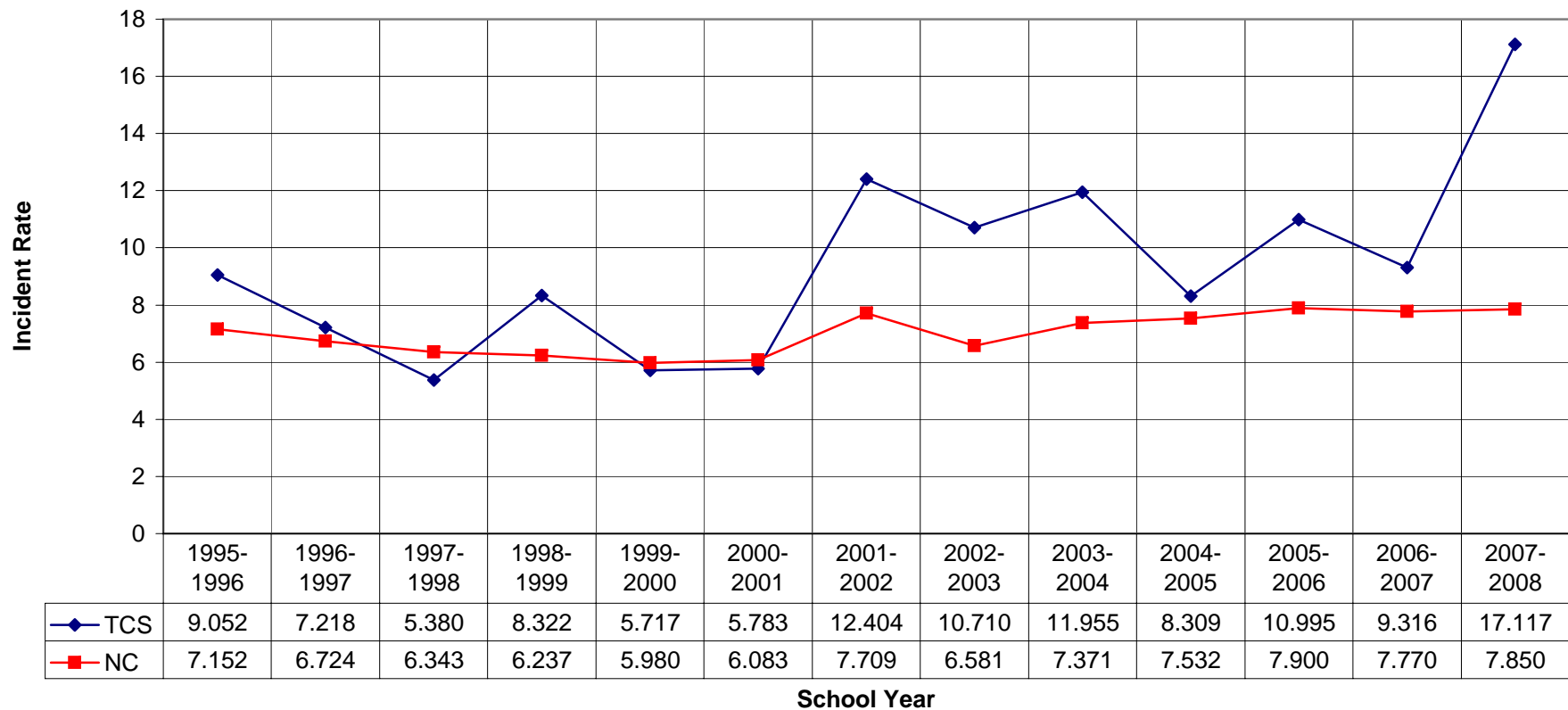
\* Denotes new incident categories for the 2001-2002 reporting cycle.

This report reflects data collected for all years in the reporting model.

## Annual School Crime & Violence Incident Rates

**Goal 3.2:** Every school promotes a healthy, active lifestyle where students are encouraged to make responsible choices.

### DISTRICT-TO-STATE COMPARISON



# Annual School Crime & Violence Incident Rates

## WESTERN NC REGIONAL PROFILE, 2007-08

**Goal 3.2:** Every school promotes a healthy, active lifestyle where students are encouraged to make responsible choices.

District	PW	PS	PA *	AP	AR	SA	AW	SO	PF	RO	RW	IM	R	D	K	BT *	BS *	Total	Incident Rate	TCS Difference
Asheville City	5	9	4	2	0	0	0	0	1	0	0	0	0	0	0	0	0	21	5.702	11.415
Avery	2	5	6	0	0	0	0	0	0	0	0	0	0	0	0	0	0	13	5.824	11.293
Buncombe	44	148	18	3	1	0	0	0	0	0	0	0	0	0	0	4	1	219	8.633	8.484
Cherokee	1	2	0	0	0	0	0	0	1	0	0	0	0	0	0	1	0	5	1.384	15.733
Clay	1	1	0	0	0	0	0	0	0	0	0	0	0	0	0	0	0	2	1.475	15.642
Graham	0	3	4	0	0	0	0	0	0	0	0	0	0	0	0	1	0	8	6.826	10.291
Haywood	15	54	14	1	2	0	1	2	1	0	0	0	0	0	0	0	0	90	11.512	5.605
Henderson	6	49	4	1	0	0	0	0	0	0	0	0	0	0	0	1	0	61	4.733	12.384
Jackson	2	30	9	0	0	0	0	0	0	0	0	0	0	0	0	0	0	41	11.208	5.909
Macon	0	0	0	0	0	0	0	0	0	0	0	0	0	0	0	0	0	0	0.000	17.117
Madison	4	10	1	0	0	0	0	0	0	0	0	0	0	0	0	0	0	15	5.792	11.325
McDowell	5	18	4	0	0	0	0	0	0	0	0	0	0	0	0	0	0	27	4.154	12.963
Mitchell	4	17	15	0	0	0	0	0	0	1	0	0	0	0	0	0	0	37	17.098	0.019
Polk	0	25	1	0	0	0	0	0	0	0	0	0	0	0	0	0	0	26	10.582	6.535
Rutherford	23	40	7	2	1	1	0	0	5	0	0	0	0	0	0	2	0	81	8.497	8.620
Swain	4	8	10	0	0	0	1	0	0	0	0	0	0	0	0	0	0	23	12.507	4.610
<b>Transylvania</b>	<b>23</b>	<b>37</b>	<b>3</b>	<b>1</b>	<b>0</b>	<b>0</b>	<b>0</b>	<b>0</b>	<b>0</b>	<b>0</b>	<b>0</b>	<b>0</b>	<b>0</b>	<b>0</b>	<b>0</b>	<b>0</b>	<b>0</b>	<b>64</b>	<b>17.117</b>	<b>---</b>
Yancey	8	8	9	1	0	0	0	0	0	0	0	0	0	0	0	0	0	26	10.569	6.548
<b>Regional</b>	<b>147</b>	<b>464</b>	<b>109</b>	<b>11</b>	<b>4</b>	<b>1</b>	<b>2</b>	<b>2</b>	<b>8</b>	<b>1</b>	<b>0</b>	<b>0</b>	<b>0</b>	<b>0</b>	<b>0</b>	<b>9</b>	<b>1</b>	<b>759</b>	<b>7.979</b>	<b>9.139</b>

**LEGEND**

- |             |                                      |           |                                       |             |                                    |
|-------------|--------------------------------------|-----------|---------------------------------------|-------------|------------------------------------|
| <b>PW</b>   | Possession of a weapon               | <b>AW</b> | Assault involving the use of a weapon | <b>R</b>    | Rape                               |
| <b>PS</b>   | Possession of a controlled substance | <b>PF</b> | Possession of a firearm               | <b>K</b>    | Kidnapping                         |
| <b>PA *</b> | Possession of an alcoholic beverage  | <b>RO</b> | Robbery without a dangerous weapon    | <b>D</b>    | Death by other than natural causes |
| <b>AP</b>   | Assault on school personnel          | <b>SO</b> | Sexual offense                        | <b>BT *</b> | Bomb threat                        |
| <b>AR</b>   | Assault resulting in serious injury  | <b>RW</b> | Robbery with a dangerous weapon       | <b>BS *</b> | Burning of a school building       |
| <b>SA</b>   | Sexual assault                       | <b>IM</b> | Indecent liberties with a minor       |             |                                    |

**NOTES**

\* Denotes new incident categories for the 2001-2002 reporting cycle.